

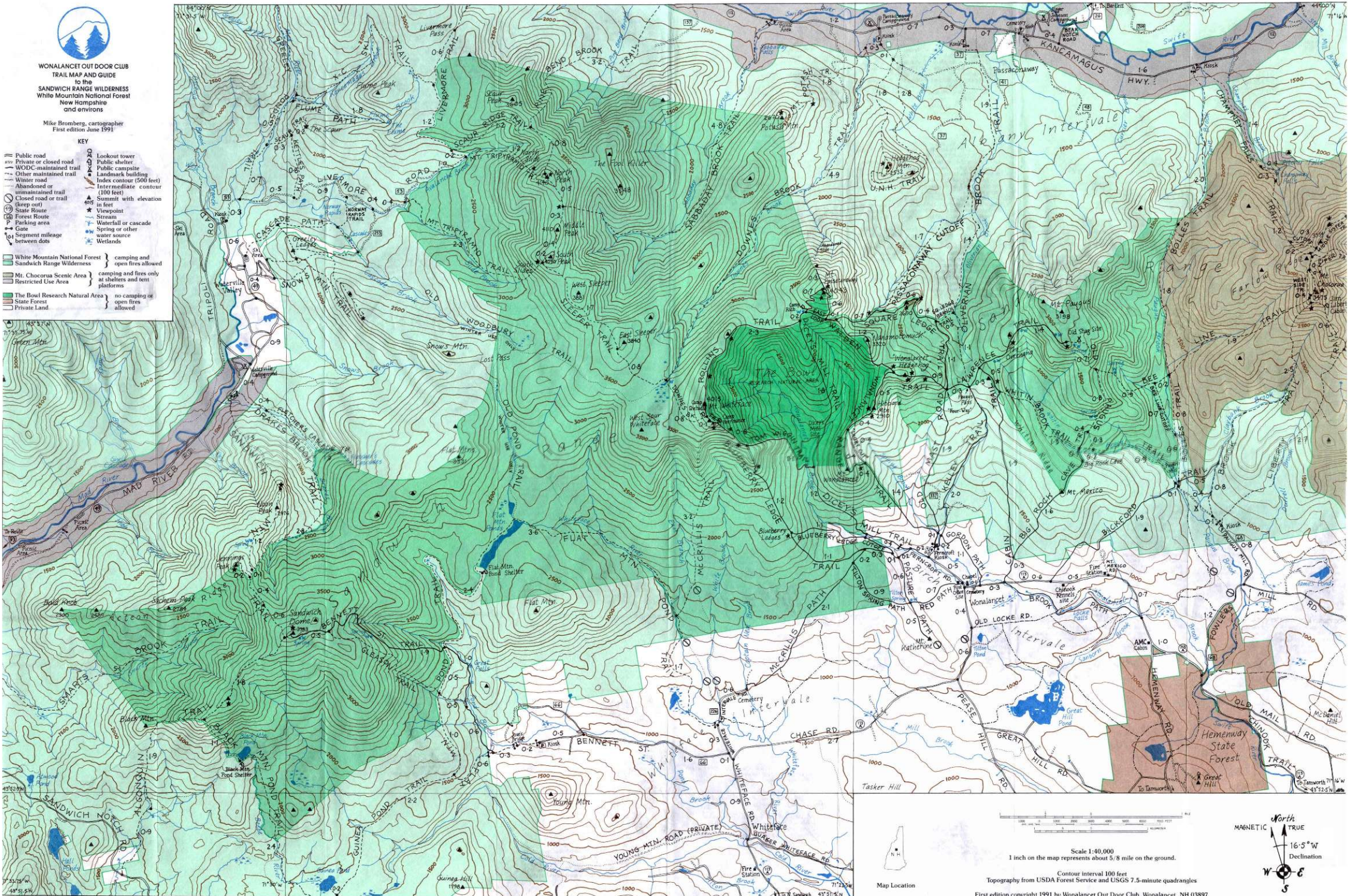


WONALANCET OUT DOOR CLUB
TRAIL MAP AND GUIDE
 to the
SANDWICH RANGE WILDERNESS
 White Mountain National Forest
 New Hampshire
 and environs

Mike Bromberg, cartographer
 First edition June 1991

KEY

- | | | | |
|--|---------------------------------|--|-------------------------------|
| | Public road | | Lookout tower |
| | Private or closed road | | Public shelter |
| | WDC-maintained trail | | Public campsite |
| | Other maintained trail | | Landmark building |
| | Water road | | Index contour (500 feet) |
| | Abandoned or unmaintained trail | | Intermediate contour |
| | Closed road or trail (keep out) | | Summit with elevation in feet |
| | State Route | | Viewpoint |
| | Forest Route | | Stream |
| | Parking area | | Waterfall or cascade |
| | Gate | | Spring or other water source |
| | Segment mileage between dots | | Wetlands |
-
- | | | | |
|--|--------------------------------|--|---|
| | White Mountain National Forest | | camping and open fires allowed |
| | Sandwich Range Wilderness | | camping and fires only at shelters and tent platforms |
| | Mt. Chocoma Scenic Area | | Restricted Use Area |
| | The Bowl Research Natural Area | | no camping or open fires allowed |
| | State Forest | | |
| | Private Land | | |



Map Location

Scale 1:40,000
 1 inch on the map represents about 5/8 mile on the ground.

Contour interval 100 feet
 Topography from USDA Forest Service and USGS 7.5-minute quadrangles

First edition copyright 1991 by Wonalancet Out Door Club, Wonalancet, NH 03897

MAGNETIC North
 TRUE
 Declination
 16.5° W